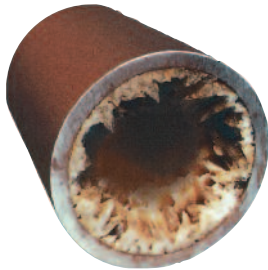


# Watts® Anti-Scale Water Treatment Systems

## The problem

Calcium creates scale in pipes, on appliances and other plumbing surfaces. This leads to higher heating and energy costs and expensive repairs to appliances, such as ice machines, coffee makers, dishwashers and cooling towers in commercial buildings.



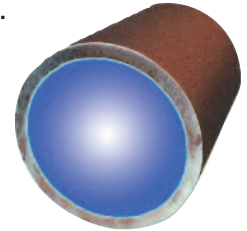
Scale can also be a source for bacteria to grow, which can be a health concern in drinking water applications.

Calcium, on the other hand, is important to human health, and supplements are recommended if Calcium is reduced or totally void in one's diet.



## The solution

WATTS® Anti-Scale systems transform Calcium *ions* into Calcium *crystals*, which are stable and cannot attach to pipes, surfaces, hardware or heat exchanger components. The crystals are so small they are easily rinsed away by the water flow.



## Benefits

- Scale is virtually eliminated!
- Aids in removing existing scale.
- No costly repairs to appliances due to scale.
- No salt.
- No brine tank.
- No backwash.
- Saves water!
- No electricity.
- Easy installation.

**Note:** For satisfactory results recommended flow rates and model sizing must be followed.

## Residential models

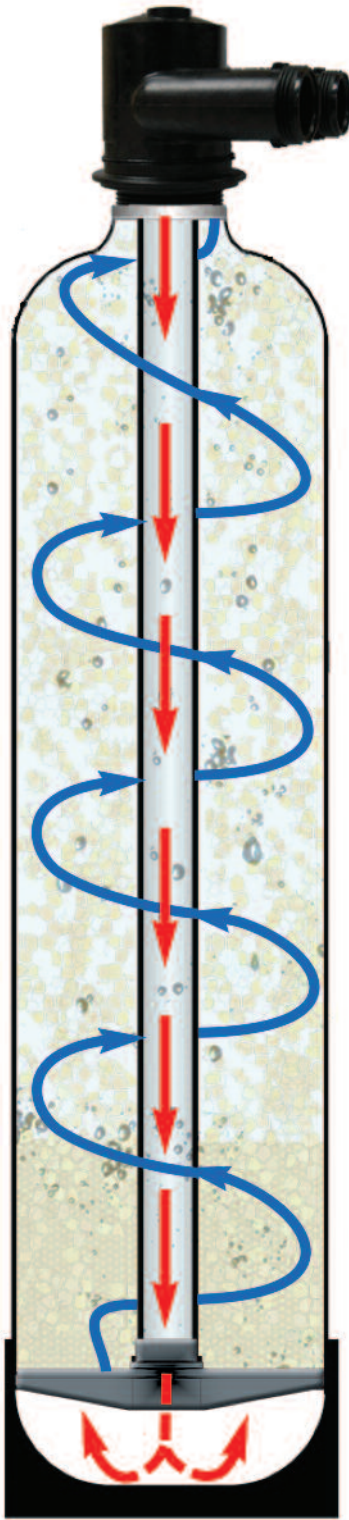
PART NUMBER	TANK SIZE (IN.)	TANK TYPE	PIPE SIZE (IN.)	MEDIA LITERS	GRAVEL LBS.	SERVICE FLOW GPM	FLOOR SPACE L X W X H (IN.)	SHIP WT. (LBS)
M8408-RES	8x35	Vortech	1"	3.5	NA	10	11x11x42	30
M8409-RES	9x35	Vortech	1"	4	NA	12	12x12x42	32
M8410-RES	10x54	Vortech	1"	4.5	NA	15	13x13x61	37
M8412-RES	12x52	Vortech	1"	6.5	NA	20	15x15x59	45
M8413-RES	13x54	Vortech	1"	7.5	NA	25	15x15x61	51

Note: By-pass valves are optional. KC11V3006 is optional by-pass valve for 1" systems. Maximum hardness is 25 grains per gallon at specified flow rates.

## Commercial models

Part Number	Tank Size (In.)	TANK TYPE	Pipe Size (In.)	Media Liters	Gravel Lbs.	Service Flow GPM	Floor Space L x W x H (In.)	Ship Wt. (lbs)
M8409-COM	9x35	Vortech	1"	5.5	NA	12	12x12x42	32
M8410-COM	10x54	Vortech	1"	6.25	NA	15	13x13x61	37
M8412-COM	12x52	Vortech	1"	9.25	NA	20	15x15x59	45
M8413-COM	13x54	Vortech	1"	11	NA	25	15x15x61	51
M8414-COM	14x65	Vortech	1"	12.5	NA	30	15x15x72	77
M8416-COM	16x65	Standard	1.5"	16.5	50	50	17x17x72	138
M8421-COM	21x62	Standard	1.5"	28	100	70	22x22x69	250
M8424-COM	24x72	Standard	2"	40	200	100	28x28x79	500

Note: Commercial systems designed for long runs and high usage. By-pass valves are optional. Maximum hardness is 25 grains per gallon at specified flow rates.



## Proven results!

Lab tests conducted at the Watts test facility, located in San Antonio, Texas indicate ScaleNet™ anti-scale media virtually eliminates new scale formation and aids in the removal of existing scale. Tests were conducted in water temperatures to 120°F and hardness levels of 17 grains per gallon. Photos (below) show scale formation in untreated water and no scale in the ScaleNet treated water.



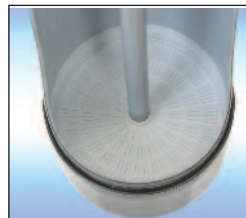
**Scale Build-Up**  
(In untreated water).



**No Scale!**  
(With ScaleNet treatment).

## Specifications

Matrix	Ceramic coated polymer.
Density	1.1 to 1.2 lbs. per cubic foot
Weight	650 g/L
Capacity	1 liter per 3.0 gallons of flow (min.)
Lifetime	3-5 years based on hardness and chlorine levels.
Temperature	40°F minimum to 140°F maximum (4°C to 60°C)
pH	6 to 9 (effective range)



### Vortech® tanks

Vortech tanks are used to provide increased contact time between the ScaleNet media and water for increased performance.

### ScaleNet™ cartridges

We also supply cartridges with ScaleNet anti-scale media for low flow applications.

PART NUMBER	SIZE	FLOW (MAX.)
SNC2510	2.5"x 10"	1 gpm
SNC2520	2.5"x 20"	2 gpm
SNC4520	4.5"x 20"	4 gpm



*A Watts Water Technologies Company*

### Watts Water Quality & Conditioning Products

800-659-8400 (press 2 for sales)  
Western Region: 800-840-1688 (TGI Div.)  
Email: [wqp@watts.com](mailto:wqp@watts.com)  
[watts.com](http://watts.com)

*Distributed by:*